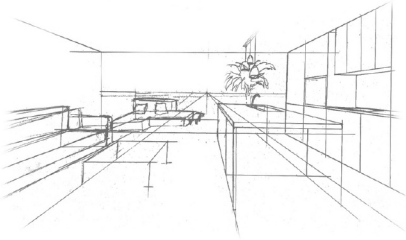


# Royal Sea Breeze

L U X U R Y L I V I N G

---

*Floorplans*

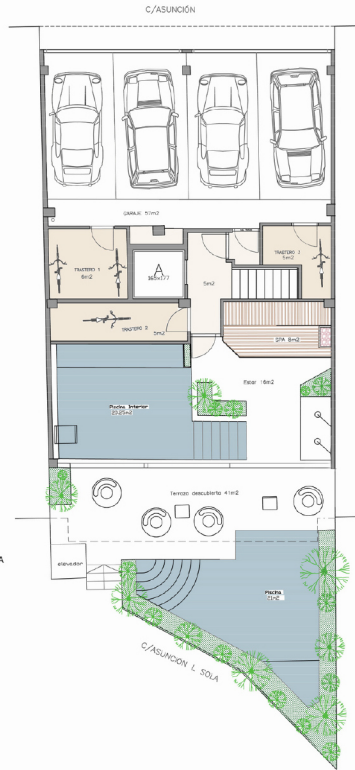


## LOS ALCÁZARES MARMENOR

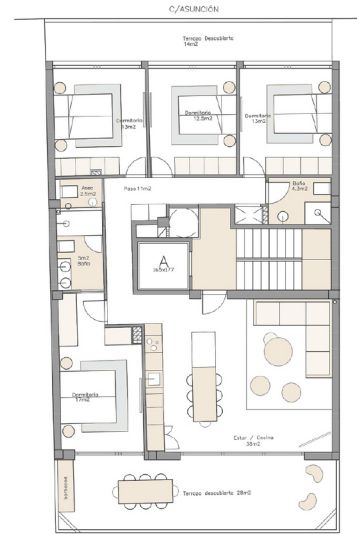
4 PROPERTIES WITH SEA VIEWS  
AND SWIMMING POOL  
4 PROPIEDADES VISTAS AL MAR  
Y PISCINA

With modern amenities and seamless access to the beach, these homes create the ultimate blend of comfort, style, and coastal luxury.

Con modernas comodidades y acceso directo a la playa, estas casas ofrecen la combinación perfecta de confort, estilo y lujo costero.



BOTTOM FLOOR/PLANTA BAJA



FIRST FLOOR/PRIMERA PLANTA

### BOTTOM FLOOR / PLANTA BAJA

FIRST FLOOR/PRIMERA PLANTA	
CONSTRUCTED AREA/ÁREA CONSTRUIDA	m <sup>2</sup>
INDOOR/INTERIOR	141m <sup>2</sup>
OUTDOOR/EXTERIOR	62m <sup>2</sup>
<b>TOTAL</b>	<b>203m<sup>2</sup></b>

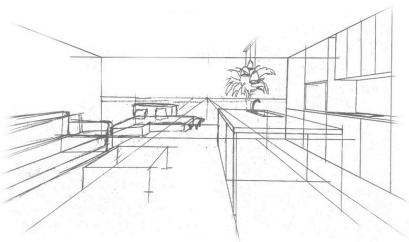
### EXCLUSIVE RESIDENT AREA / ÁREAS RESIDENCIALES EXCLUSIVA

Outdoor Terrace / Terraza Exterior	41m <sup>2</sup>
Spa / Spa	8m <sup>2</sup>
Indoor Area / Área Interior	16m <sup>2</sup>
Pool / Piscina	21m <sup>2</sup>
Indoor Pool / Piscina Interior	20.25m <sup>2</sup>
Storage Space / Trastero	6m <sup>2</sup>
Garage / Garaje	57m <sup>2</sup>

### FIRST FLOOR/PRIMERA PLANTA

FIRST FLOOR/PRIMERA PLANTA	
CONSTRUCTED AREA/ÁREA CONSTRUIDA	m <sup>2</sup>
INDOOR/INTERIOR	117.20m <sup>2</sup>
OUTDOOR/EXTERIOR	42m <sup>2</sup>
<b>TOTAL</b>	<b>159.20m<sup>2</sup></b>
+GARAGE/GARAJE	12m <sup>2</sup>
+STORAGE/TRASTERO	6m <sup>2</sup>
<b>TOTAL +</b>	<b>163.2m<sup>2</sup></b>

INDOOR/INTERIOR	m <sup>2</sup>
Living Room/Estar	38m <sup>2</sup>
Master Bedroom/Habitación n°1	17m <sup>2</sup>
Bathroom/Baño	5m <sup>2</sup>
Bedroom n°2/Habitación n°2	13m <sup>2</sup>
Bedroom n°3/Habitación n°2	13m <sup>2</sup>
Bedroom n°4/Habitación n°2	12.5m <sup>2</sup>
Bathroom/Baño	4.3m <sup>2</sup>
Toilet/Aseo	2.5m <sup>2</sup>
OUTDOOR/EXTERIOR	
Sea Terrace/ Terraza del mar	28m <sup>2</sup>
Terrace/ Terraza trasera	14m <sup>2</sup>

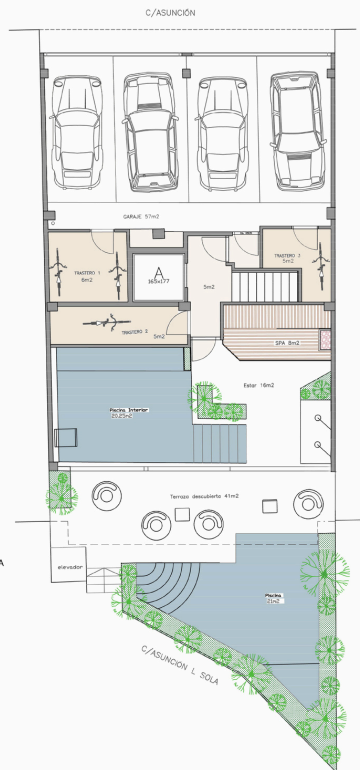


## LOS ALCÁZARES MAR MENOR

4 PROPERTIES WITH SEA VIEWS  
AND SWIMMING POOL  
4 PROPIEDADES VISTAS AL MAR  
Y PISCINA

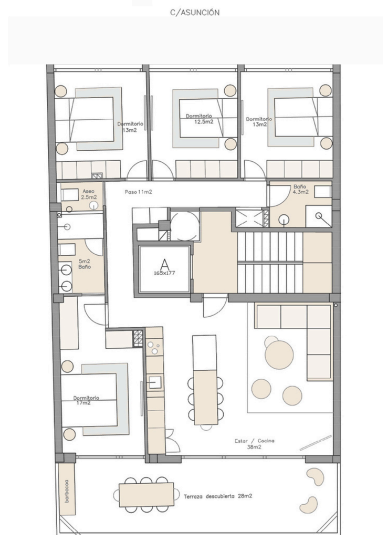
With modern amenities and seamless access to the beach, these homes create the ultimate blend of comfort, style, and coastal luxury.

Con modernas comodidades y acceso directo a la playa, estas casas ofrecen la combinación perfecta de confort, estilo y lujo costero.



BOTTOM FLOOR/PLANTA BAJA

SECOND&THIRD FLOOR  
/SEGUNDA Y TERCERA PLANTA



### BOTTOM FLOOR / PLANTA BAJA

FIRST FLOOR/PRIMERA PLANTA	
CONSTRUCTED AREA/ÁREA CONSTRUIDA	m <sup>2</sup>
INDOOR/INTERIOR	141m <sup>2</sup>
OUTDOOR/EXTERIOR	62m <sup>2</sup>
<b>TOTAL</b>	<b>203m<sup>2</sup></b>

### EXCLUSIVE RESIDENT AREA / ÁREAS RESIDENCIALES EXCLUSIVA

Outdoor Terrace / Terraza Exterior	41m <sup>2</sup>
Spa / Spa	8m <sup>2</sup>
Indoor Area / Área Interior	16m <sup>2</sup>
Pool / Piscina	21m <sup>2</sup>
Indoor Pool / Piscina Interior	20.25m <sup>2</sup>
Storage Space / Trastero	6m <sup>2</sup>
Garage / Garaje	57m <sup>2</sup>

### SECOND&THIRD FLOOR /SEGUNDA Y TERCERA PLANTA

#### FIRST FLOOR/PRIMERA PLANTA

CONSTRUCTED AREA/ÁREA CONSTRUIDA	
INDOOR/INTERIOR	117.20m <sup>2</sup>
OUTDOOR/EXTERIOR	28m <sup>2</sup>
<b>TOTAL</b>	<b>145.20m<sup>2</sup></b>
+ GARAGE/GARAJE	12m <sup>2</sup>
+ STORAGE/TRASTERO	5m <sup>2</sup>
<b>TOTAL +</b>	<b>162.2m<sup>2</sup></b>

#### INDOOR/INTERIOR

Living Room / Estar	38m <sup>2</sup>
Master Bedroom / Habitación n°1	17m <sup>2</sup>
Bathroom / Baño	5m <sup>2</sup>
Bedroom n°2 / Habitación n°2	13m <sup>2</sup>
Bedroom n°3 / Habitación n°2	13m <sup>2</sup>
Bedroom n°4 / Habitación n°2	12.5m <sup>2</sup>
Bathroom / Baño	4.3m <sup>2</sup>
Toilet / Aseo	2.5m <sup>2</sup>
OUTDOOR/EXTERIOR	
Sea Terrace / Terraza del mar	28m <sup>2</sup>



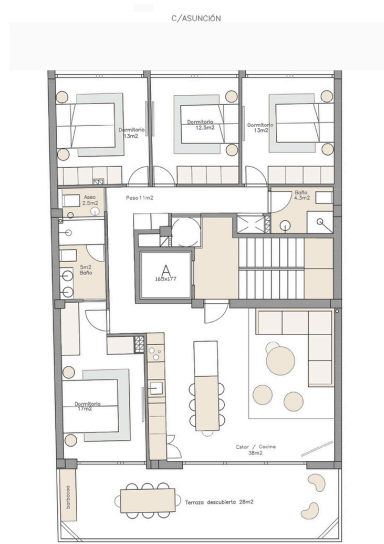
BOTTOM FLOOR/PLANTA BAJA

**BOTTOM FLOOR / PLANTA BAJA**

FIRST FLOOR/PRIMERA PLANTA	
CONSTRUCTED AREA/ÁREA CONSTRUIDA	m <sup>2</sup>
INDOOR/INTERIOR	141m <sup>2</sup>
OUTDOOR/EXTERIOR	62m <sup>2</sup>
<b>TOTAL</b>	<b>203m<sup>2</sup></b>

**EXCLUSIVE RESIDENT AREA / ÁREAS RESIDENCIALES EXCLUSIVA**

Outdoor Terrace / Terraza Exterior	41m <sup>2</sup>
Spa / Spa	8m <sup>2</sup>
Indoor Area / Área Interior	16m <sup>2</sup>
Pool / Piscina	21m <sup>2</sup>
Indoor Pool / Piscina Interior	20.25m <sup>2</sup>
Storage Space / Trastero	6m <sup>2</sup>
Garage / Garaje	57m <sup>2</sup>



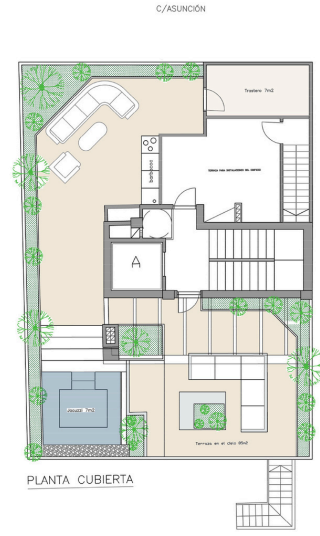
FOURTH FLOOR /CUARTA PLANTA

**FOURTH FLOOR /CUARTA PLANTA**

**FIRST FLOOR/PRIMERA PLANTA**

CONSTRUCTED AREA/ÁREA CONSTRUIDA	m <sup>2</sup>
INDOOR/INTERIOR	117.20m <sup>2</sup>
OUTDOOR/EXTERIOR	28m <sup>2</sup>
<b>TOTAL</b>	<b>145.20m<sup>2</sup></b>
+GARAGE/GARAJE	12m <sup>2</sup>
+STORAGE/TRASTERO	7m <sup>2</sup>
<b>TOTAL +</b>	<b>164.2m<sup>2</sup></b>

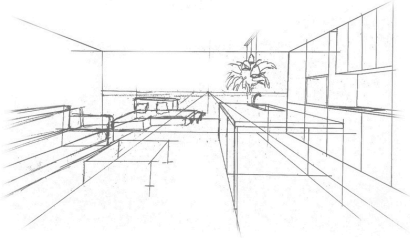
SKY TERRACE /TERRAZA EN EL CIELO



PLANTA CUBIERTA

INDOOR/INTERIOR	m <sup>2</sup>	OUTDOOR/EXTERIOR	m <sup>2</sup>
Living Room /Estar	38m <sup>2</sup>	Sky Terrace / Terraza en el Cielo	85m <sup>2</sup>
Master Bedroom/Habitación n°1	17m <sup>2</sup>	Jacuzzi	7m <sup>2</sup>
Bathroom/Baño	5m <sup>2</sup>	Storage / Trastero	7m <sup>2</sup>
Bedroom n°2/Habitación n°2	13m <sup>2</sup>	<b>TOTAL</b>	<b>99m<sup>2</sup></b>
Bedroom n°3/Habitación n°2	13m <sup>2</sup>		
Bedroom n°4/Habitación n°2	12.5m <sup>2</sup>		
Bathroom/Baño	4.3m <sup>2</sup>		
Toilet/Aseo	2.5m <sup>2</sup>		
OUTDOOR/EXTERIOR			
Sea Terrace/ Terraza del mar	28m <sup>2</sup>		

# Exterior building view



## LOS ALCÁZARES MAR MENOR

INTRODUCING AN EXCLUSIVE FOUR-STORY RESIDENTIAL PROJECT, WHERE EACH FLOOR IS DEDICATED TO A SINGLE, TRUE LUXURY APARTMENT. WITH SPACIOUS LAYOUTS, PREMIUM FINISHES, AND CUTTING-EDGE DESIGN, EVERY DETAIL HAS BEEN METICULOUSLY CRAFTED TO OFFER AN UNPARALLELED LIVING EXPERIENCE.

THIS PROJECT COMBINES PRIVACY, COMFORT, AND SOPHISTICATION IN ONE OF THE MOST SOUGHT-AFTER LOCATIONS, MAKING IT THE ULTIMATE CHOICE FOR THOSE SEEKING REFINED, HIGH-END LIVING.

